

# SOLAR MOUNTING

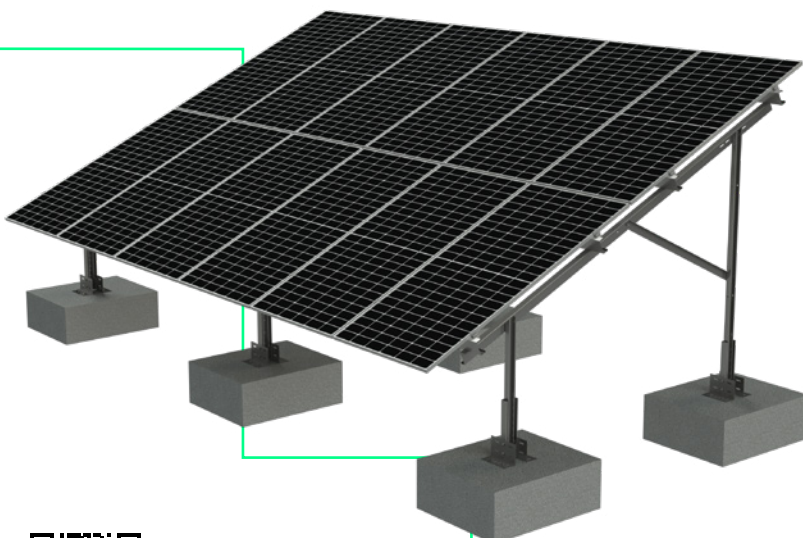


## M-TYPE PRE-CAST MONOBLOCK SYSTEM

The Solar Mounting M-Type is designed for ground conditions that require a non-intrusive system. The M-Type can also be used where a direct fixing method is required.

### 25 YEAR WARRANTY

Being made from the highest quality materials, this system comes with a 25 year product warranty as standard.



**DIGITAL COPY**  
Scan the QR code for a digital copy of the datasheet.

### DISCOVER THE ENTIRE M-TYPE RANGE

The M-Type range offers four configurations of double pile options for a range of panels:

#### M.2.1 - M-TYPE SYSTEM

2 Posts ■ 1 Panel

#### M.2.2 - M-TYPE SYSTEM

2 Posts ■ 2 Panels

#### M.2.3 - M-TYPE SYSTEM

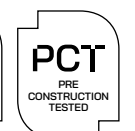
2 Posts ■ 3 Panels

#### M.2.4 - M-TYPE SYSTEM

2 Posts ■ 4 Panels

To discover more about the range or to enquire, please visit:

[www.solarmounting.co.uk](http://www.solarmounting.co.uk)

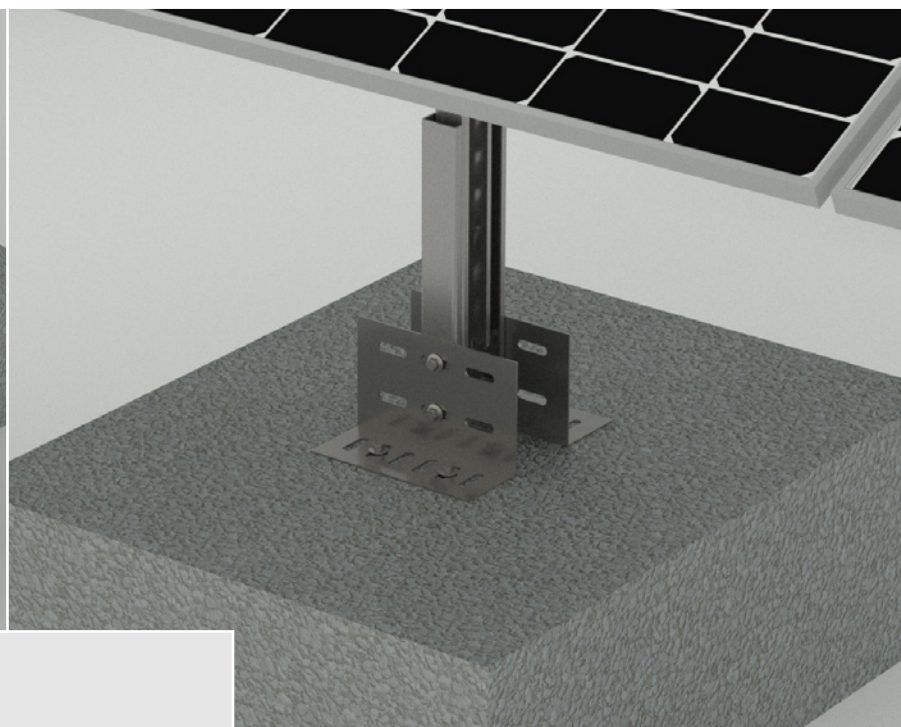
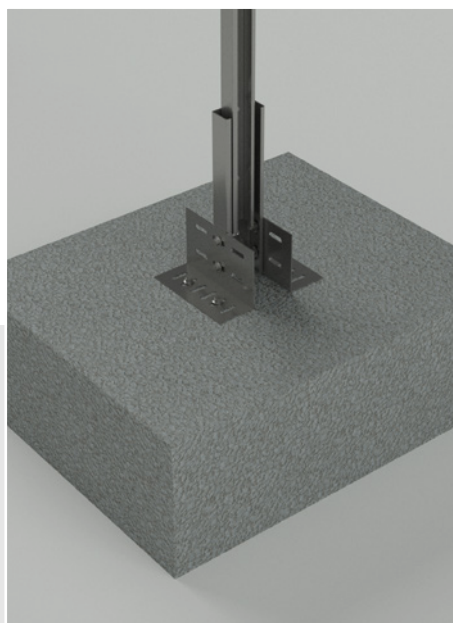


# M-TYPE PRE-CAST MONOBLOCK SYSTEM



## TECHNICAL SPECIFICATIONS

Application	Surface mounted ground types with level terrain	
System types	2 post options	
Module orientation	Landscape and portrait	
Module arrangement	1 panel portrait, 2 panels portrait, 3 panels landscape and 4 panels in landscape	
Inclination	10-30°	
Material	S450, ZM310, ZM620	Braces, joiners, posts, purlins, rafters, sliding clamps, uprights
	Aluminium alloy 6063 – T6	Panel clamp



HAVE A PROJECT IN MIND?

Call us on +44 (0)330 174 8394 ■ Email us at [info@solarmounting.co.uk](mailto:info@solarmounting.co.uk)

