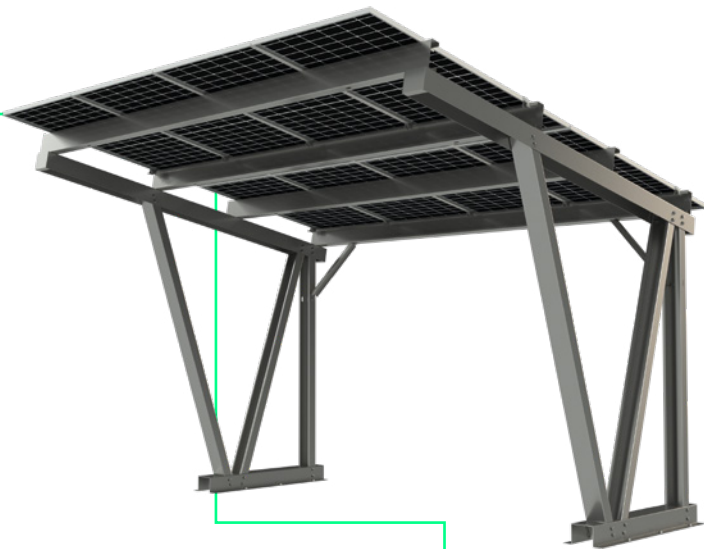


SOLAR MOUNTING

C1-TYPE SOLAR CARPORT SYSTEM C1

The Solar Mounting C1-Type carport system offers a dual purpose solution that provides shelter for vehicles and their occupants whilst simultaneously generating clean energy.

- Made from cold rolled galvanised steel sections for quick construction.
- Option for steelwork to be finished in standard RAL colours.



DIGITAL COPY
Scan the QR code
for a digital copy of
the datasheet.

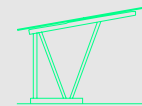


DISCOVER THE ENTIRE
C1-TYPE RANGE

The C1-Type range offers three configurations of carport options for a range of panels:

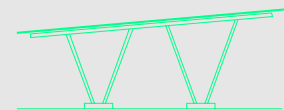
C1.1 - C1-TYPE SYSTEM

Mono pitch ■ Single bay



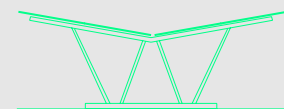
C1.2 - C1-TYPE SYSTEM

Mono pitch ■ Two bay



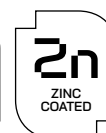
C1.3 - C1-TYPE SYSTEM

Duo pitch ■ Two bay



To discover more about the range
or to enquire, please visit:

www.solarmounting.co.uk

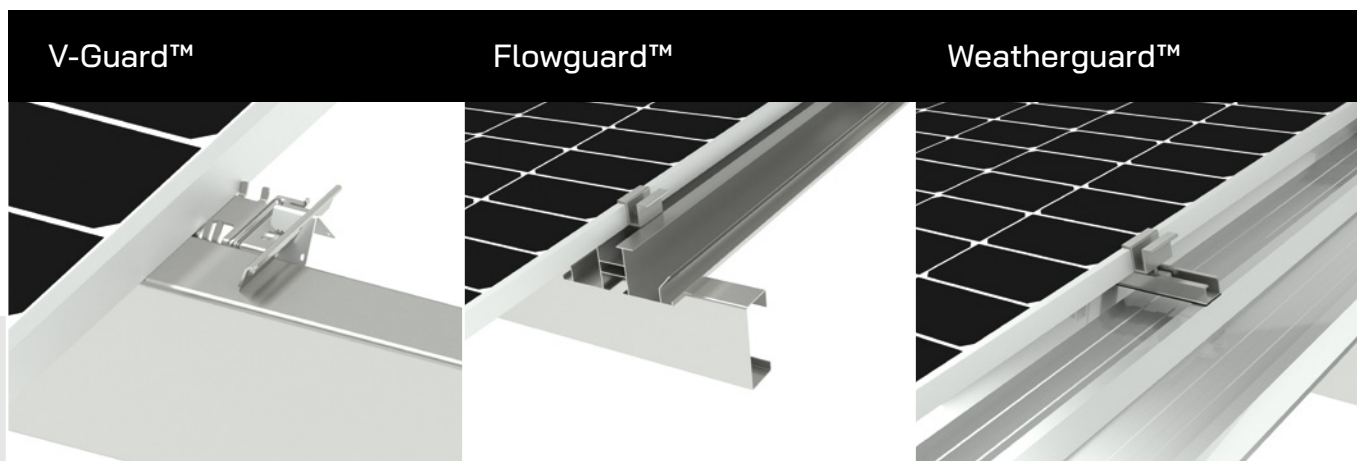


C1-TYPE SOLAR CARPORT SYSTEM C1



TECHNICAL SPECIFICATIONS		
Application	Domestic and small commercial	
System types	3 frame options	
Module orientation	Landscape and portrait	
Module arrangement	2 panels portrait per side, 4 panels landscape per side	
Inclination	2-15° (subject to panel manufacturers recommendation)	
Material	S450, ZM310, ZM620	Uprights, purlins, rafters, joiners, sliding clamps
	Aluminium alloy 6063 – T6	Panel clamp

Panel Mounting Options



- Panels fixed directly to purlins
- Underside of panels exposed to allow for bifacial panels
- Clamp panels from below for ease of installation

- Panels fixed to aluminium channels to direct rainwater
- Underside of panels exposed to allow for bifacial panels
- Gutters and downpipes can be included as optional extras

- Trapezoidal roof sheet fixed to purlins for full weather protection
- Panels fixed to standard roof system
- The underside of the panels is shielded to deter vandalism
- Gutters, downpipes and external perimeter flashings can be included as optional extras

HAVE A PROJECT IN MIND?

Call us on +44 (0)330 174 8394 ■ Email us at info@solarmounting.co.uk

