

SOLAR MOUNTING

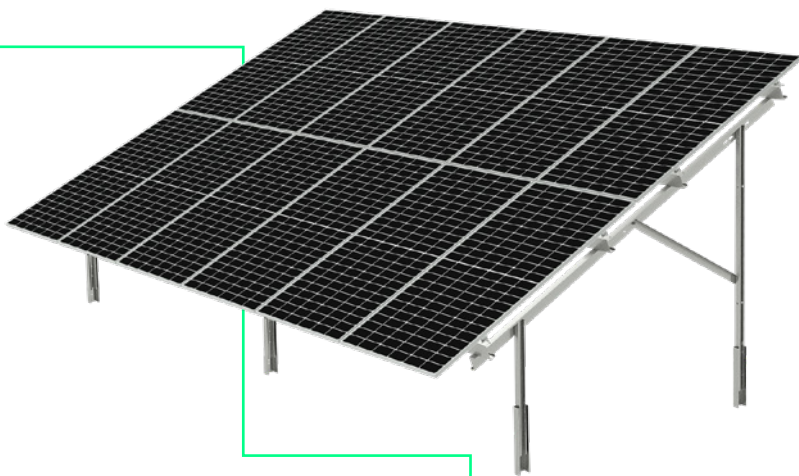


P-TYPE PILE MOUNTED SYSTEMS

The Solar Mounting P-Type system is designed for ground conditions that present little or no restrictions. This system is most popular where a combination of speed of install, durability and scalability is desired.

25 YEAR WARRANTY

Being made from the highest quality materials, this system comes with a 25 year product warranty as standard.



DISCOVER THE ENTIRE P-TYPE RANGE

The P-Type range offers six configurations with single and double pile options for a range of panels:

P.1.1 - P-TYPE SYSTEM

1 Post ■ 1 Panel

P.1.2 - P-TYPE SYSTEM

1 Post ■ 2 Panels

P.2.1 - P-TYPE SYSTEM

2 Posts ■ 1 Panel

P.2.2 - P-TYPE SYSTEM

2 Posts ■ 2 Panels

P.2.3 - P-TYPE SYSTEM

2 Posts ■ 3 Panels

P.2.4 - P-TYPE SYSTEM

2 Posts ■ 4 Panels

To discover more about the range or to enquire, please visit:

www.solarmounting.co.uk

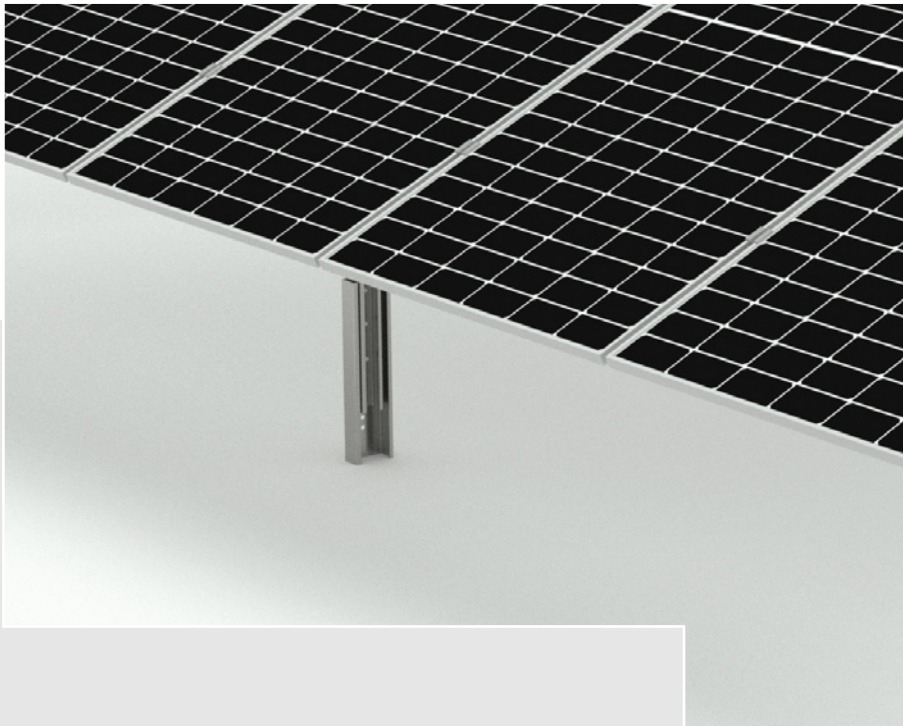


P-TYPE PILE MOUNTED SYSTEMS



TECHNICAL SPECIFICATIONS

Application	Penetrative ground types (soil and clay)	
System types	1 post and 2 post options	
Module orientation	Landscape and portrait	
Module arrangement	1 panel portrait, 2 panels portrait, 3 panels landscape and 4 panels landscape	
Inclination	10-30°	
Material	S450, ZM310, ZM620	Braces, joiners, posts, purlins, rafters, sliding clamps, uprights
	Aluminium alloy 6063 – T6	Panel clamp



HAVE A PROJECT IN MIND?

Call us on +44 (0)330 174 8394 ■ Email us at info@solarmounting.co.uk

