

SOLAR MOUNTING

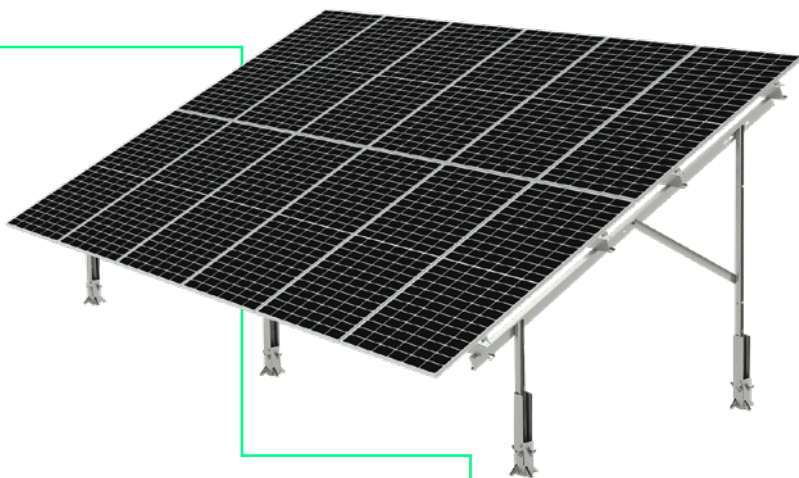


A-TYPE ANCHOR MOUNTED SYSTEMS

The Solar Mounting A-Type system is designed for ground conditions that require the system to have shallow embedment. The A-Type system is most popular where a combination of bespoke design, durability and adaptability is desired.

25 YEAR WARRANTY

Being made from the highest quality materials, this system comes with a 25 year product warranty as standard.



DISCOVER THE ENTIRE
A-TYPE RANGE

The A-Type range offers four configurations of double pile options for a range of panels:

A.2.1 - A-TYPE SYSTEM

2 Posts ■ 1 Panel

A.2.2 - A-TYPE SYSTEM

2 Posts ■ 2 Panels

A.2.3 - A-TYPE SYSTEM

2 Posts ■ 3 Panels

A.2.4 - A-TYPE SYSTEM

2 Posts ■ 4 Panels

To discover more about the range
or to enquire, please visit:

www.solarmounting.co.uk

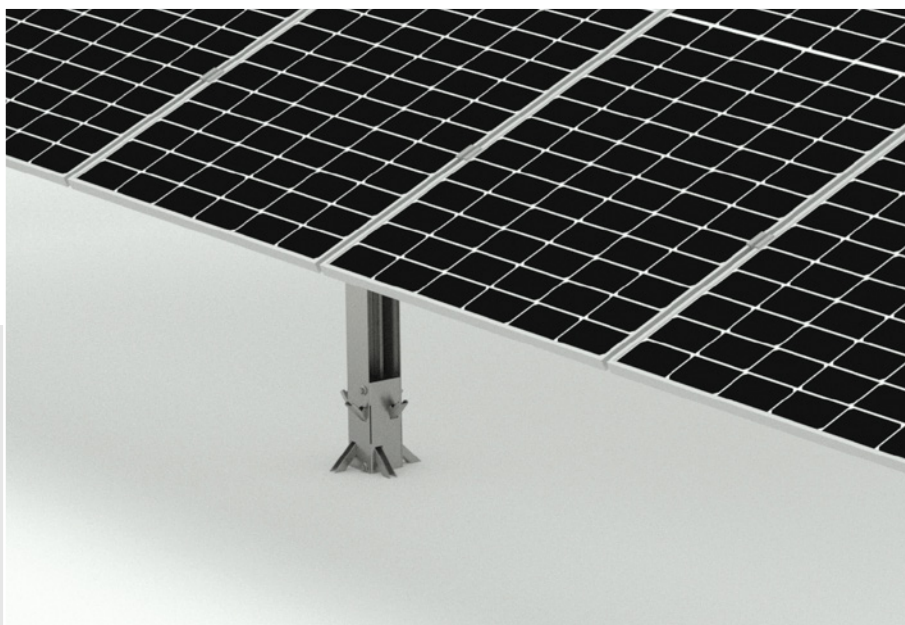


A-TYPE ANCHOR MOUNTED SYSTEMS



TECHNICAL SPECIFICATIONS

Application	Low penetration ground types (landfill and made-up ground)	
System types	2 post options	
Module orientation	Landscape and portrait	
Module arrangement	1 panel portrait, 2 panels portrait, 3 panels landscape and 4 panels landscape	
Inclination	10-30°	
Material	S450, ZM310, ZM620	Braces, joiners, posts, purlins, rafters, sliding clamps, uprights
	Aluminium alloy 6063 – T6	Panel clamp



HAVE A PROJECT IN MIND?

Call us on +44 (0)330 174 8394 ■ Email us at info@solarmounting.co.uk

